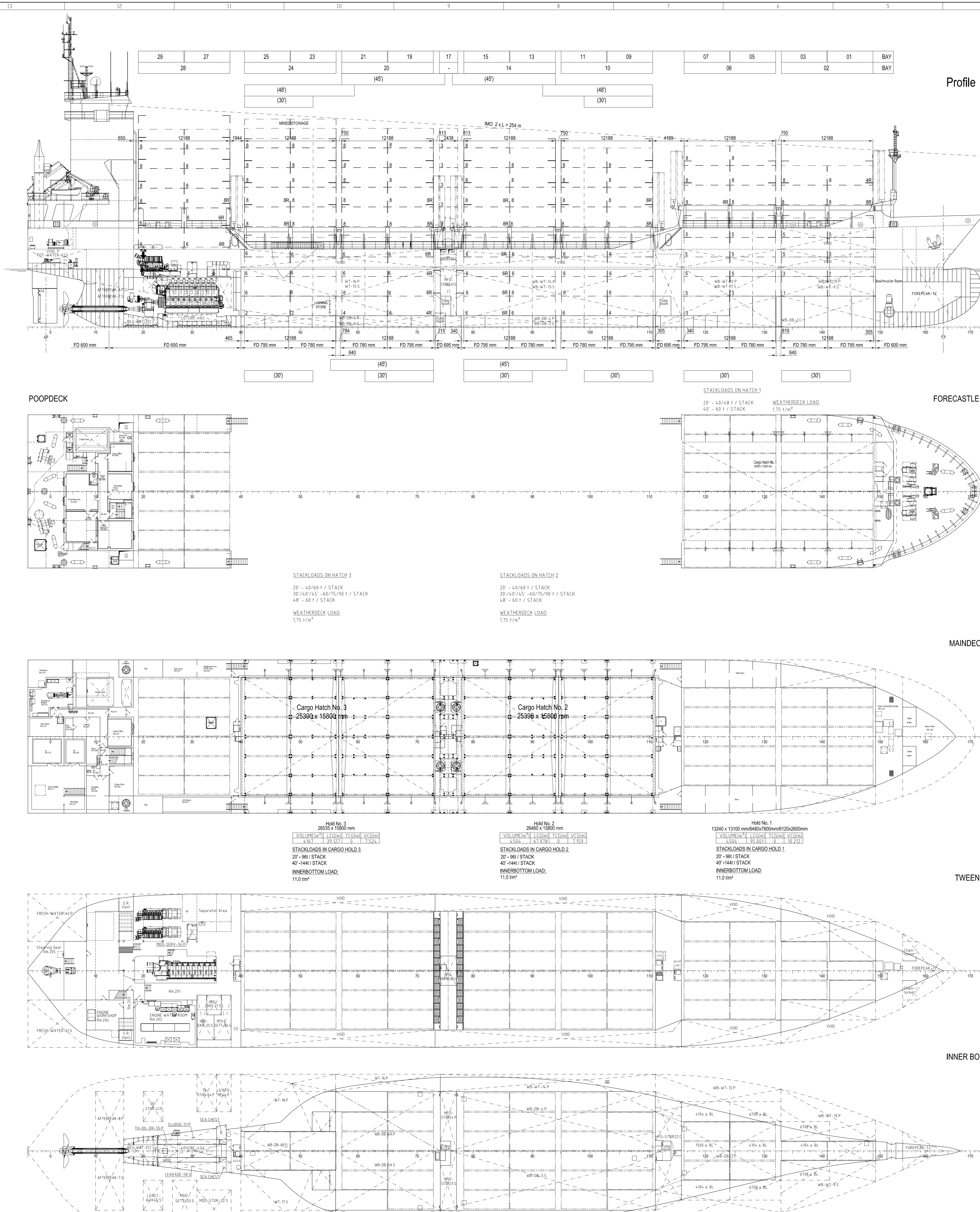


Tank Status tables for WATER BALLAST, HFO, MDO, G.O, LUBE OIL, FRESH WATER, and FW. Each table lists tank names, load percentages, and maximum free surface moments.



Profile
FORECASTLE DECK
MAINDECK
TWEENDECK
INNER BOTTOM
Machinery and equipment list including Main Engine, Aux Engine, Generators, Deck Equipment, Life Saving Equipment, and Nautilus Equipment.

DEADWEIGHT TABLE

DEADWEIGHT TABLE showing weight distribution across various compartments (Water, Fuel, Oil, etc.) and total deadweight tonnage.

PRELIMINARY
CW 700

Class: GL 100 A 5 E "MULTI PURPOSE CARGO SHIP" IW, BWM-F
EQUIPPED FOR CARRIAGE OF CONTAINER
SOLAS II-2 REG.19
* MC E AUT
Main Particulars
Length over all: 127,00 m
Length between Perpendiculars: 119,40 m
Breadth moulded: 20,40 m
Depth to Maindeck: 10,35 m
Draft: 7,70 m
Container Capacity (IMO): 712 TEU
Speed: 18,50 kn

STAND 21.02.06
Drawn: 15.02.06 abh/Du
Checked: abh/Du
Approved: 20/2/06
Date: 15.02.06
Ship's Name: Cossens Wert GmbH
Builder's No.: 3023/06
Draw No.: 013-02
STAND 21.02.06
CW700
3023/06
CAPACITY PLAN
INGENIEUR-TECHNIK GMBH
0964/05-0161